



Henry Street Park I

The Neighborhood Playground

Located near Henry Street and Pacific Street
in the Borough of Brooklyn

Community Input Meeting

November 1 2023

MPFP Landscape Architecture & Urban Planning

Henry Street Park I Scoping Meeting

Agenda

1. Introduction
2. Presentation
3. Group Discussion
4. Sharing Priorities
5. Next Steps

Tentative Schedule

1. Community Input Meeting November 2023
2. Two Week Long Community Survey November 2023
3. Internal Parks Department Review December 2023
thru January 2024
4. Community Presentation February 2024
5. Finalize Park Design - March 2024
6. Parks Department Design Approval
April 2024
7. Park Construction TBD

Outreach Coordinator Information:

Jonah Swigart
pacifichicks@madisonrealtycapital.com





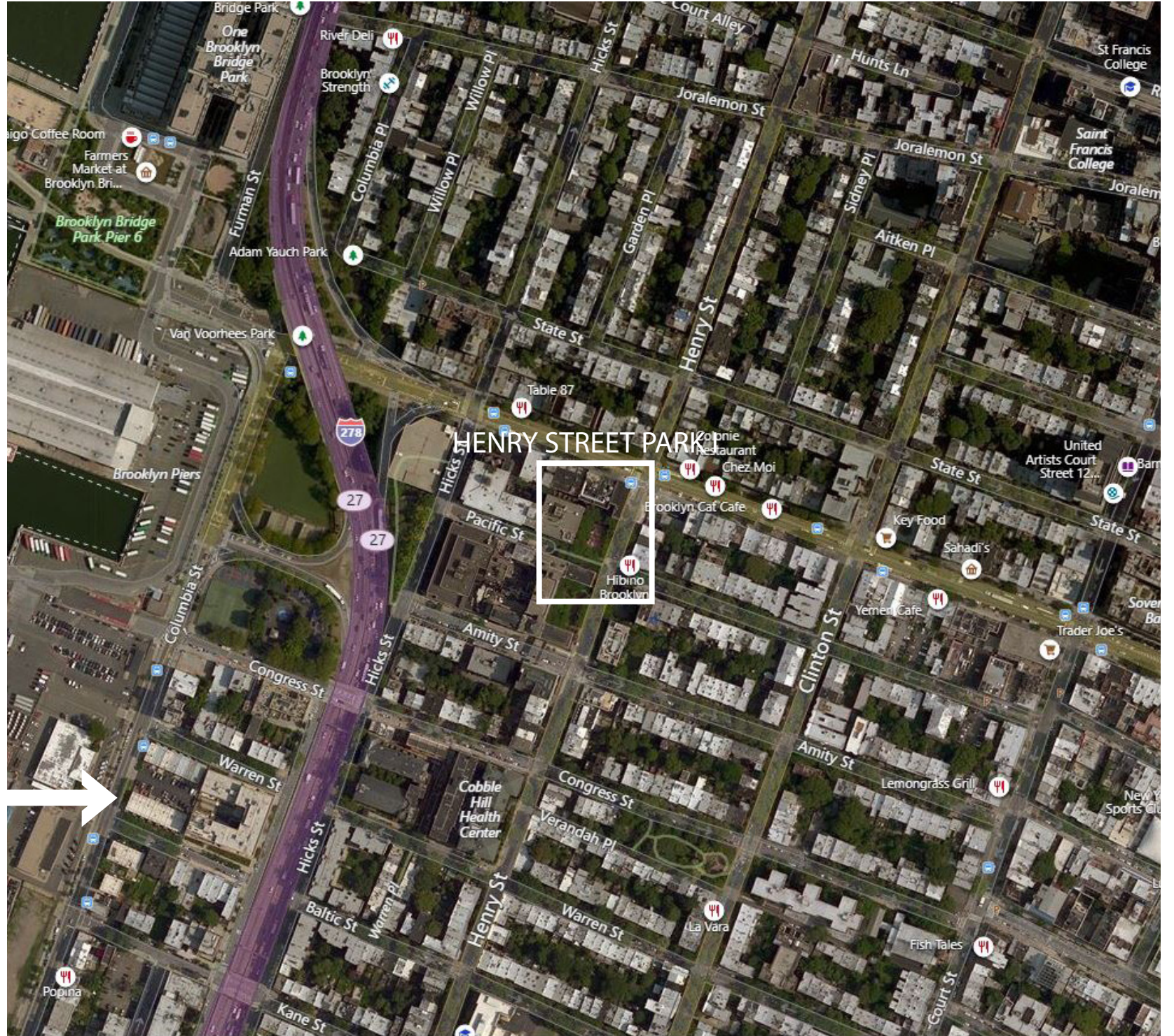
City

2 MI



Neighborhood

1000 FT



Site

250 FT



Brooklyn Heights Promenade

- Benches

Brooklyn Bridge Park Pier 5

- Soccer (3)
- Comfort Stations
- Cafe

Adam Yauch Park

- Basketball (1)
- Dog Run

Brooklyn Bridge Park Pier 6

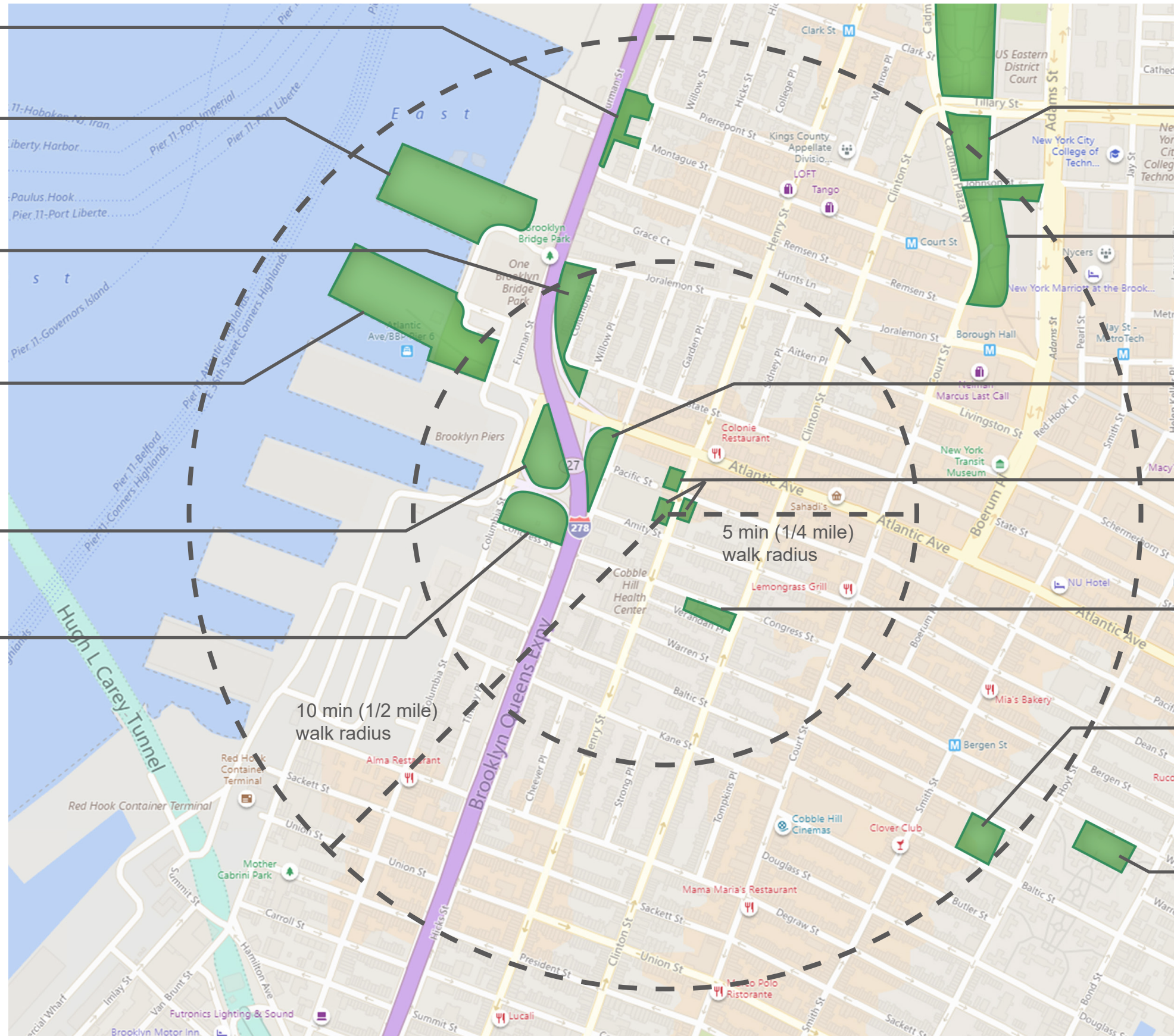
- Benches
- Cafe
- Volleyball

Van Voorhees Park

- Baseball (1)
- Raquetball (4)

Van Voorhees Playground

- Basketball (1)
- Tennis (2)
- Play Equipment
- Comfort Station



Korean War Veterans Plaza

- Benches
- Synthetic Turf

Columbus Park

- Benches
- Passive

Upper Van Voorhees Park

- Benches (13)

Henry Street Park 1, 2 & 3

- Play Equipment
- Benches

Cobble Hill Park

- Play Equipment
- Benches

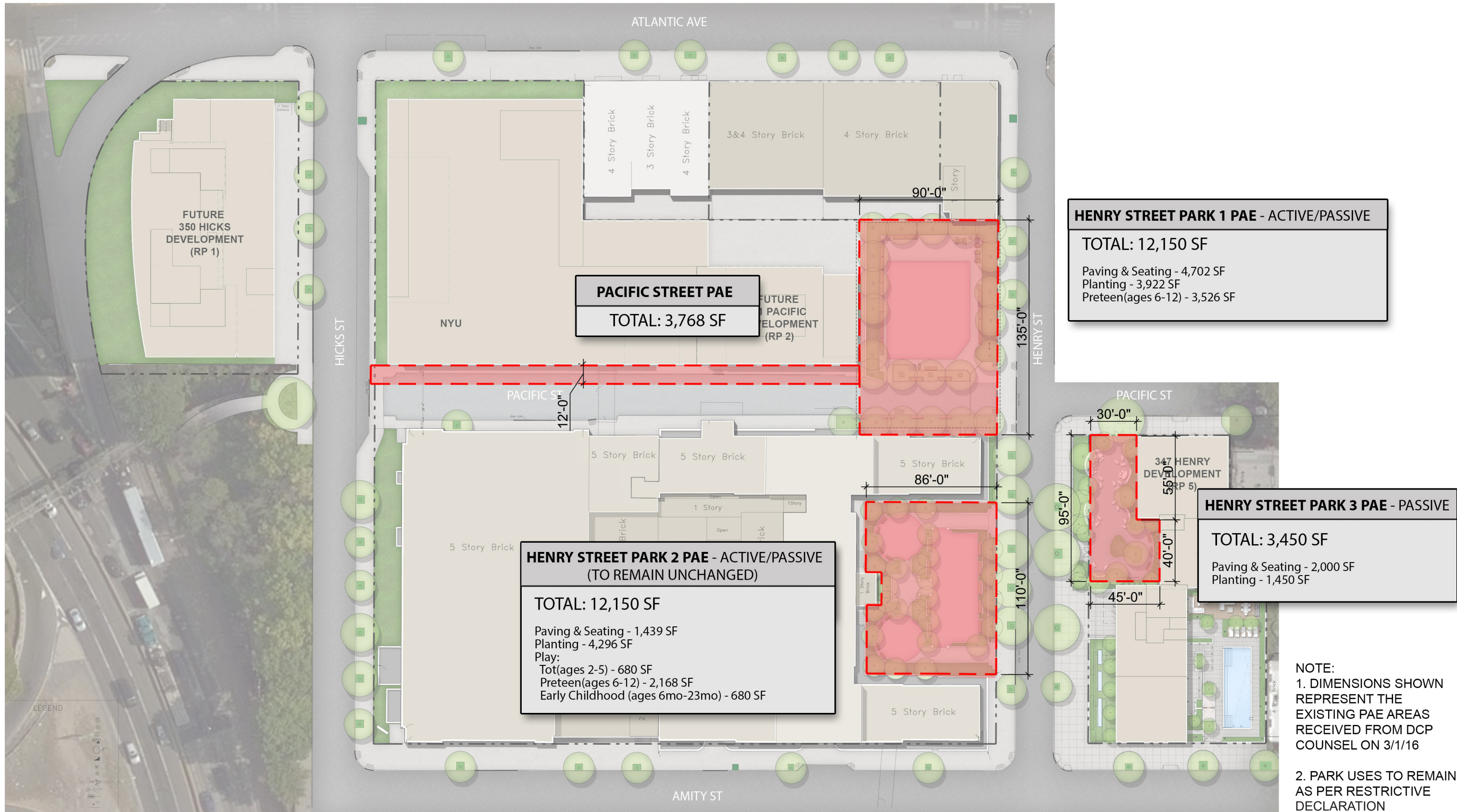
Boreum Park

- Tennis (1)
- Basketball (1)
- Play Equipment

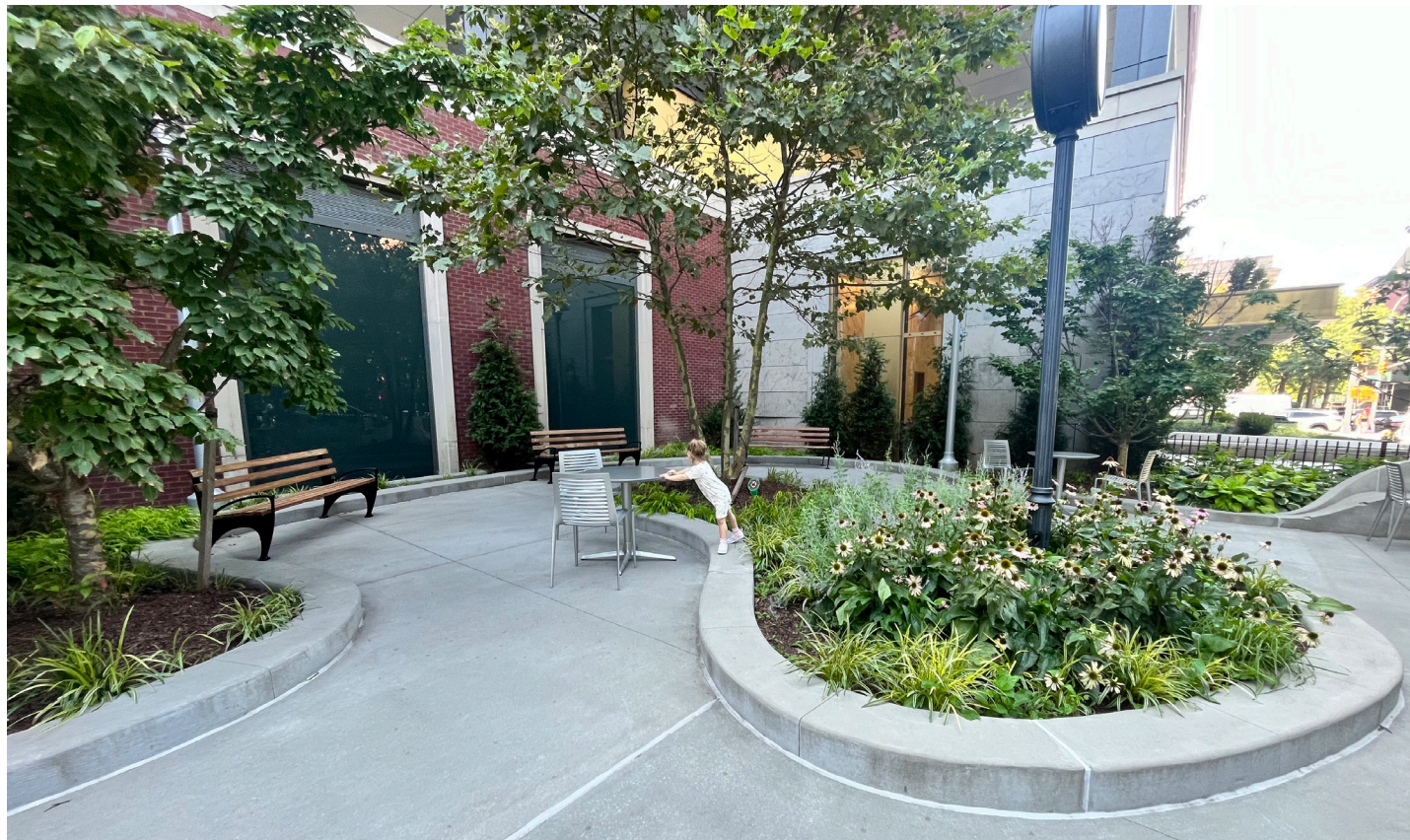
Nicolas Naquan Heyward Jr. Park

- Basketball (2)
- Handball
- Play Equipment
- Comfort Station





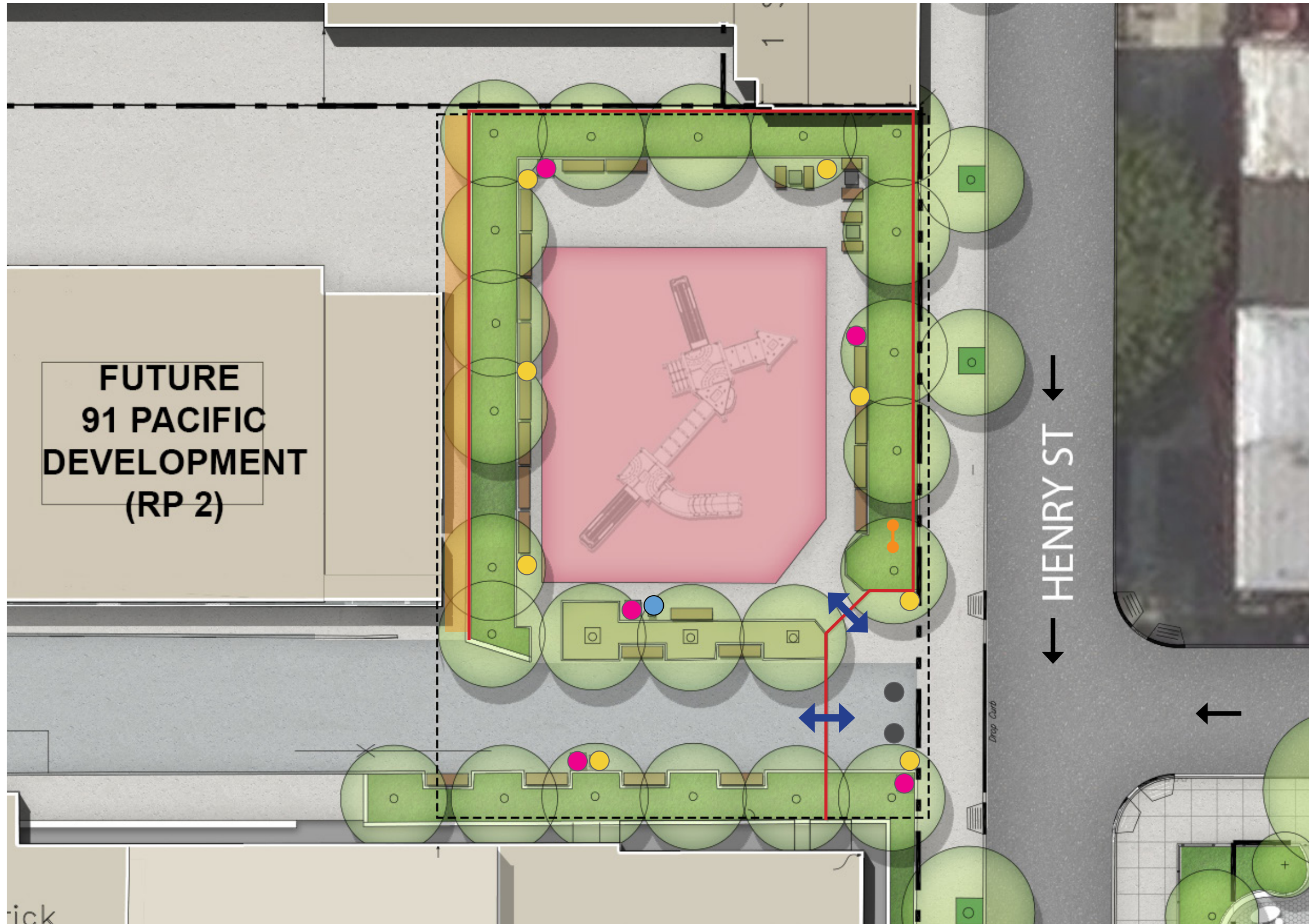






Design Guidelines/Existing Program

1. The park is designed as an active playground for ages 6-12 with passive seating.
2. Traditional fences & gates enclose the entire park.
3. All parks are enclosed by a fence that shall not exceed 4 feet in height.
4. Park edge is defined by a planted edge with a fence, shade trees, and benches.
5. Park extends into the Pacific Street pedestrian way and includes passive seating areas.
6. All park uses to remain the same as per Restrictive Declaration.



Legend

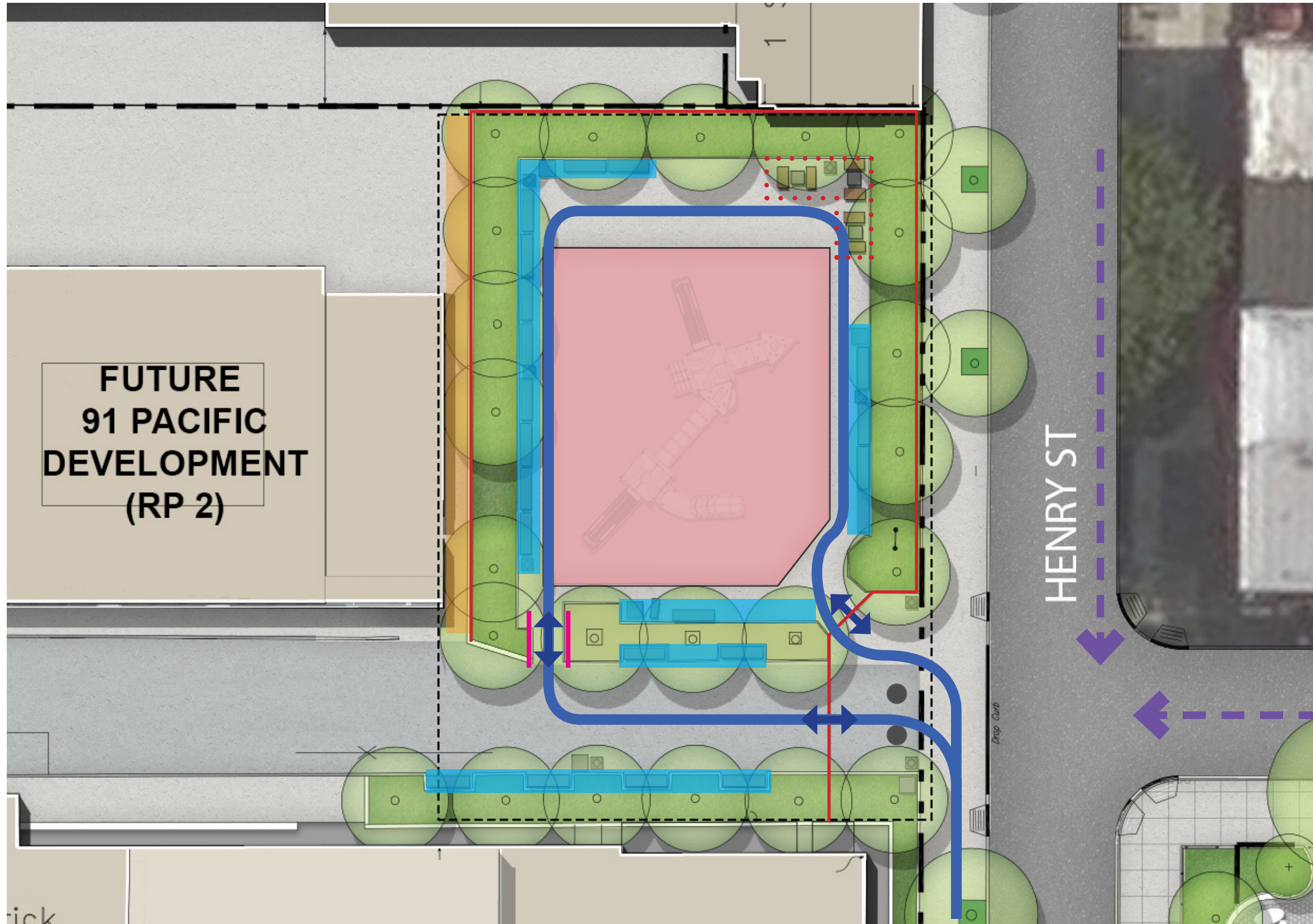
- Project Limit
- ↔ Park Entrances
- Perimeter Fence
- Traffic
- Access Easement
- Sign
- Parks Light Pole
- Drinking Fountain
- Trash Receptacles
- Bollards
- Wood Bench
- Chess Table & Chairs
- Tree

Area Breakdown

Paving & Seating - 4,575 SF
 Planting - 3,794 SF
Total: 5,095 SF

Scale: NTS



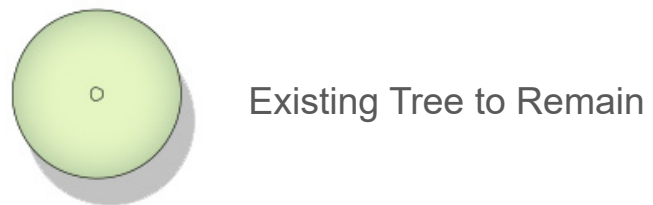
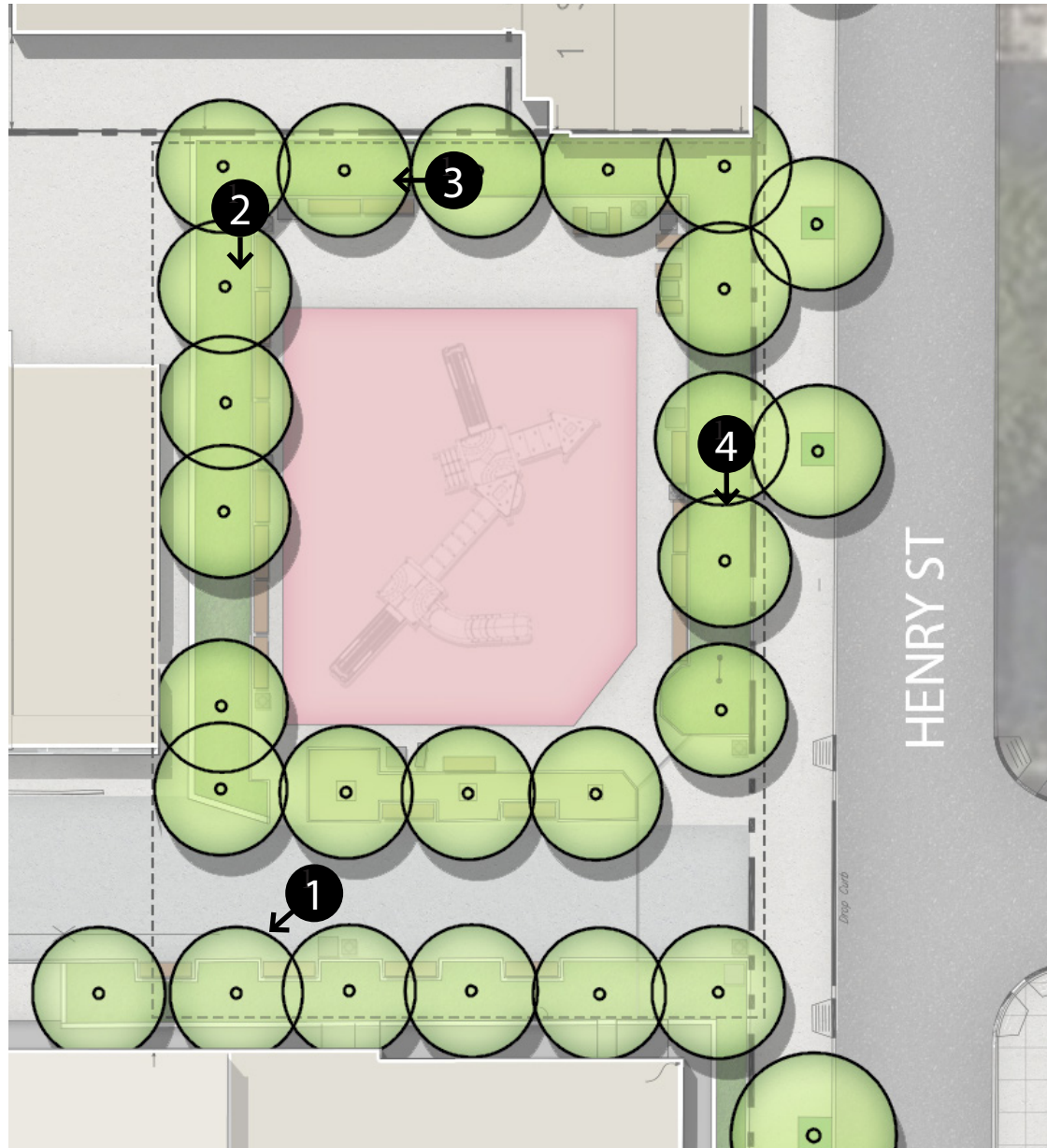


- Legend**
- Project Limit
 - ↔ Park Entrances
 - Fencing
 - Pedestrian Circulation
 - - - - - Vehicular Traffic
 - Access Easement
 - Sign
 - Bollards
 - ADA Access Ramp
 - Play Area
 - Chess Area
 - Passive Seating Area
- 21 Benches
 - Wood Bench
 - Chess Table & Chairs
 - Tree

Area Breakdown

Paving & Seating - 4,575 SF
 Planting - 3,794 SF
Total: 5,095 SF

Scale: NTS



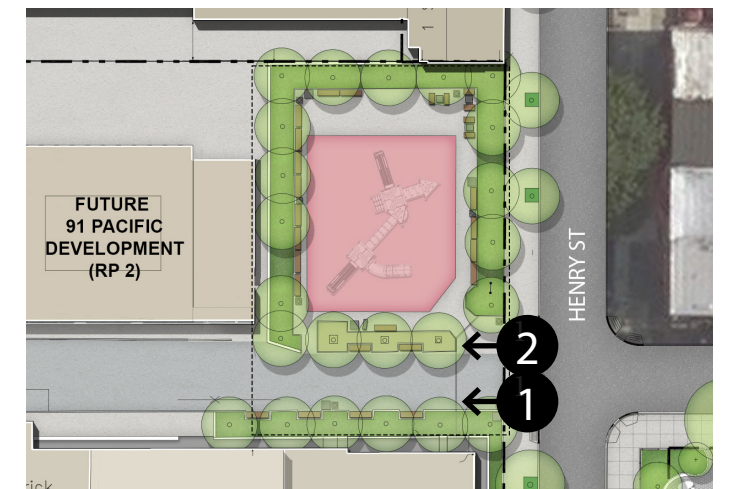
Note: All existing trees to be preserved; images are provided for reference.



1. Pacific Street Entrance Gate & Bollards via Henry Street



2. Entrance Gate via Henry Street

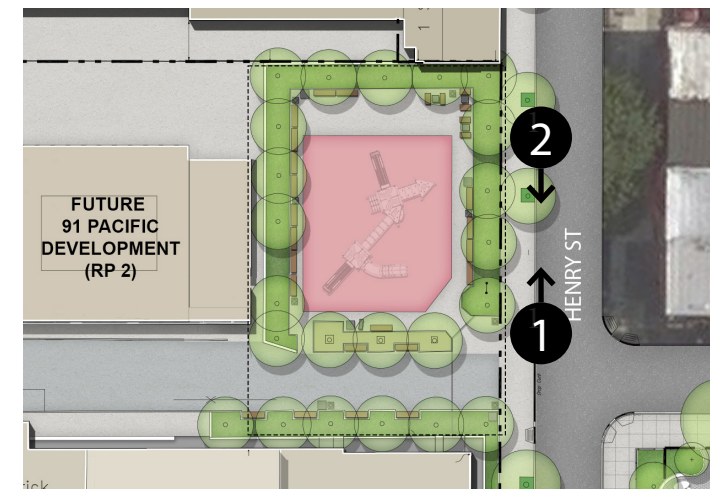




1. Henry Street Frontage (Looking North)



2. Henry Street Frontage (Looking South)

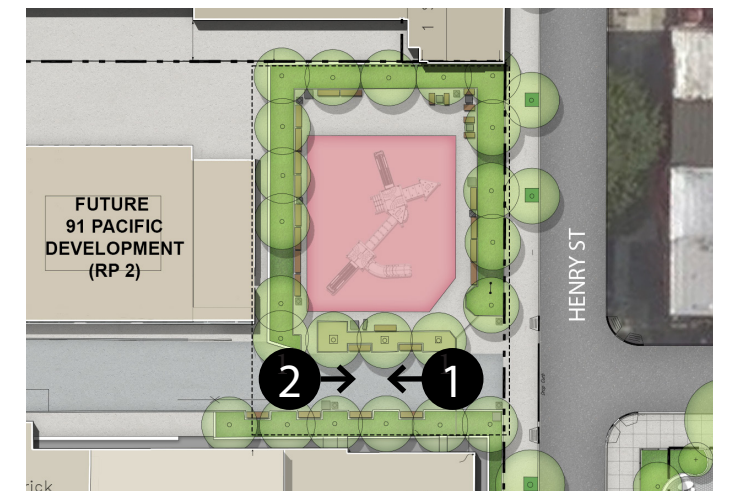




1. Pacific Street Seating Areas (Looking West)



2. Pacific Street Seating Areas (Looking East)

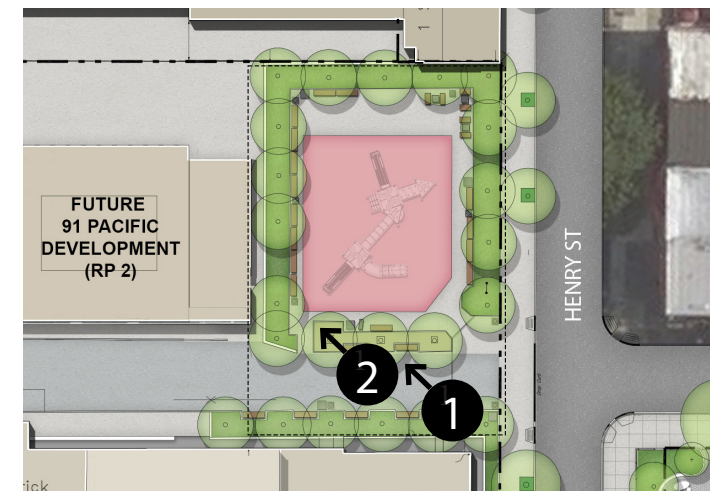




1. ADA Access Ramp along Pacific Street



2. Tree Pit Conditions

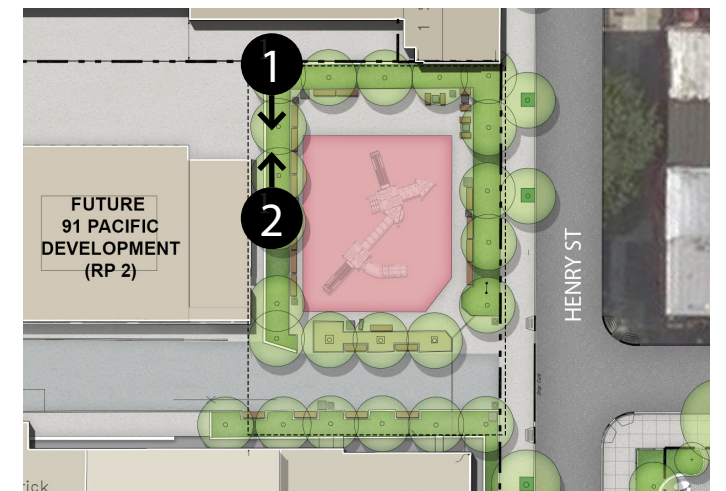




1. Typical Planter Bed & Passive Seating Area (Looking South)



2. Typical Planter Bed & Passive Seating Area (Looking North)

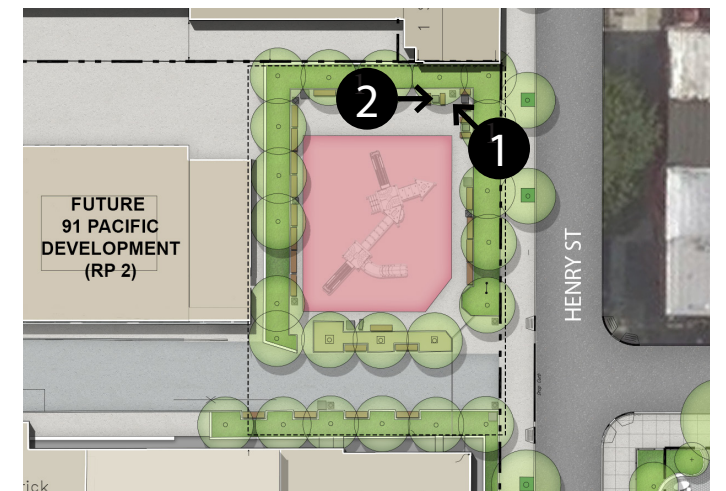




1. Chess Table Area



2. Chess Table Area

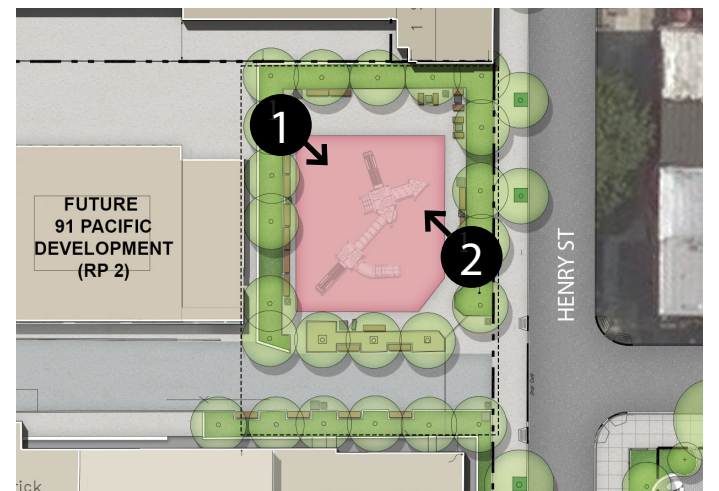




1. Play Equipment & Safety Surfacing



2. Play Equipment & Safety Surfacing

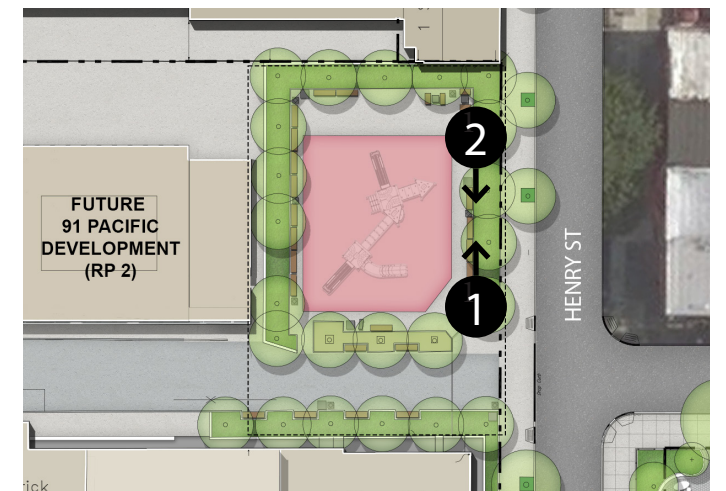




1. Typical Planted Buffer (Henry Street Frontage)



2. Typical Planted Buffer (Henry Street Frontage)



Existing Playground Inventory

- Five slides
- Climbing Ladders
- Monkey Bars
- Two bridges
- Spiral stairs
- Platforms
- Tic Tac Toe Station
- Painted Pavement Games
- 15 benches







Working Group Questions

1. What do you want to do in the park?
2. Do you want to keep the chess tables?
3. Do you want tables and if so what type of tables?
4. Do you want shade?
5. Do you want a variety of seating?
6. Do you want more planting?
7. Do you envision the materials as traditional or contemporary?
8. Quantity of play equipment?
9. Should play equipment style match existing or be something different?
10. Do you want more seating?

Next Steps

Tentative Schedule

1. Two Week Long Community Survey November 2023
2. Internal Parks Department Review - December 2023 thru January 2024
3. Community Presentation - February 2024
4. Finalize Park Design - March 2024
5. Parks Department Design Approval - April 2024
6. Park Construction - TBD

Thank You!

